



# Warmer Drawer

Models WD-20, WD-21A, & WD-35  
owner's manual

**Manufacturing Numbers:**

9400100, 9400101, 9400102, 9400103, 9400104,  
9400106, 9400110, 9400111, 9400112, 9400113,  
9400114, 9400120, 9400121, 9400122, 9400123,  
and 9400124,



# WARMER DRAWER

## TABLE OF CONTENTS

<b>Table of Contents</b> .....	<b>2</b>	<b>Operation</b> .....	<b>7</b>
<b>Owner Information</b> .....	<b>2</b>	Operating Instructions .....	7
General .....	2	Hi-Limit Reset .....	7
Warranty Information .....	2	<b>Maintenance</b> .....	<b>8</b>
Service/Technical Assistance .....	3	Cleaning .....	8
<b>Important Safety Information</b> .....	<b>3</b>	Replacing Components .....	8
<b>Specifications</b> .....	<b>5</b>	<b>Troubleshooting</b> .....	<b>10</b>
Electrical Ratings and Plug Configuration.....	5	<b>Wiring Diagram</b> .....	<b>10</b>
Capacity.....	5	Pictorial Wiring Diagram.....	10
Shipping Weight .....	5	<b>Replacement Parts - WD-20</b> .....	<b>11</b>
Dimensions.....	5	<b>Replacement Parts – WD-21A &amp; 35A</b> .....	<b>13</b>
<b>Installation</b> .....	<b>6</b>	<b>Notes</b> .....	<b>15</b>
Unpacking.....	6	<b>Limited Warranty</b> .....	<b>16</b>
Equipment Setup .....	6		

## OWNER INFORMATION

### General

The Warmer Drawers are designed to be used separately, stacked or to fit under the Hot Dog Corrals.

This manual provides the safety, installation and operating procedures for the Warmer Drawer. We recommend that all information contained in this manual be read prior to installing and operating the unit.

Your Warmer Drawer is manufactured from the finest materials available and is assembled to our strict quality standards. This unit has been tested at the factory to ensure dependable trouble-free operation.

### Warranty Information

Please read the full text of the Limited Warranty in this manual.

If the unit arrives damaged, contact the carrier immediately and file a damage claim with them. Save all packing materials when filing a claim. Freight damage claims are the responsibility of the purchaser and **are not** covered under warranty.

The warranty **does not** extend to:

- Damages caused in shipment or damage as result of improper use.
- Installation of electrical service.
- Normal maintenance as outlined in this manual.
- Malfunction resulting from improper maintenance.
- Damage caused by abuse or careless handling.
- Damage from moisture into electrical components
- Damage from tampering with, removal of, or changing any preset control or safety device.

**IMPORTANT! Keep these instructions for future reference.**

**If the unit changes ownership, be sure this manual accompanies the equipment.**

**OWNER INFORMATION (continued)**

**Service/Technical Assistance**

If you experience any problems with the installation or operation of your unit, contact Antunes Technical Service at +1-877-392-7854 (toll free).

Use only genuine Antunes replacement parts in this unit. Use of replacement parts other than those supplied by the manufacturer will void the warranty.

Fill in the information below and have it handy when calling Antunes Technical Service for assistance. The serial number is on the specification plate located on the side of the unit.

Purchased From: \_\_\_\_\_

Date of Purchase: \_\_\_\_\_



Model No.: \_\_\_\_\_



Serial No.: \_\_\_\_\_



Mfg. No.: \_\_\_\_\_



**IMPORTANT SAFETY INFORMATION**

Throughout this manual, you will find the following safety words and symbols that signify important safety issues with regards to operating or maintaining the equipment.

 <b>WARNING</b> 
<b>GENERAL WARNING.</b> Indicates information important to the proper operation of the equipment. Failure to observe may result in damage to the equipment and/or severe bodily injury or death.

 <b>WARNING</b> 
<b>ELECTRICAL WARNING.</b> Indicates information relating to possible shock hazard. Failure to observe may result in damage to the equipment and/or severe bodily injury or death.

 <b>CAUTION</b> 
<b>GENERAL CAUTION.</b> Indicates information important to the proper operation of the equipment. Failure to observe may result in damage to the equipment.

 <b>WARNING</b> 
<b>HOT SURFACE WARNING.</b> Indicates information important to the handling of equipment and parts. Failure to observe caution could result in personal injury.

# WARMER DRAWER

## IMPORTANT SAFETY INFORMATION (continued)

In addition to the warnings and cautions in this manual, use the following guidelines for safe operation of the unit.

- Read all instructions before using equipment.
- For your safety, the equipment is furnished with a properly grounded cord connector. Do not attempt to defeat the grounded connector.
- Install or locate the equipment only for its intended use as described in this manual. Do not use corrosive chemicals in this equipment.
- Do not operate this equipment if it has a damaged cord or plug, if it is not working properly, or if it has been damaged or dropped.
- This equipment should be serviced by qualified personnel only. Contact Antunes Technical Service adjustment or repair.
- Do not block or cover any openings on the unit.
- Do not immerse cord or plug in water.
- Keep cord away from heated surfaces.
- Do not allow cord to hang over edge of table or counter.

The following warnings and cautions appear throughout this manual and should be carefully observed.

- Turn the unit off, disconnect the power source and allow unit to cool down before performing any service or maintenance on the unit.
- The procedures in this chapter may include the use of chemical products. These chemical products will be highlighted with bold face letters followed by the abbreviated HCS (Hazard Communication Standard). See Hazard Communication Standard manual for the appropriated Material Safety Data Sheets (MSDS).

- The unit should be grounded according to local electrical codes to prevent the possibility of electrical shock. It requires a grounded receptacle with separate electrical lines, protected by fuses or circuit breaker of the proper rating.
- All electrical connections must be in accordance with local electrical codes and any other applicable codes.
- **WARNING ELECTRICAL SHOCK HAZARD. FAILURE TO FOLLOW THESE INSTRUCTIONS COULD RESULT IN SERIOUS INJURY OR DEATH.**
  - Electrical ground is required on this appliance.
  - Do not modify the power supply cord plug. If it does not fit the outlet, have a proper outlet installed by a qualified electrician.
  - Do not use an extension cord with this appliance.
  - Check with a qualified electrician if you are in doubt as to whether the appliance is properly grounded.

### WARNING

**ELECTRICAL SHOCK HAZARD. FAILURE TO FOLLOW THE INSTRUCTIONS IN THIS MANUAL COULD RESULT IN SERIOUS INJURY OR DEATH.**

- Electrical ground is required on this appliance.
- Do not modify the power supply cord plug. If it does not fit the outlet, have a proper outlet installed by a qualified electrician.
- Do not use an extension cord with this appliance.
- Check with a qualified electrician if you are in doubt as to whether the appliance is properly grounded.

### CAUTION

**All electrical connections must be in accordance with local electrical codes and any other applicable codes.**

## SPECIFICATIONS

### Electrical Ratings and Plug Configuration

Model & Mfg. No.	Volts	Watts	Amps	Hertz	Plug Description
WD-20 9400100	120	500	4.2	50/60	NEMA 5-15P 15 Amp., 250 Volt
WD-20 9400101	208- 230	409- 500	1.2-2.2	50/60	BS-1363 - Fused Permaplug 16 Amp., 250 VAC
WD-20 9400102	230	500	2.2	50/60	CEE 7/7 16 Amp., 250 Volt
WD-20 9400103 Saudi Arabia	230	500	2.2	50/60	BS-1363 - Fused Permaplug 16 Amp., 250 VAC
WD-20 9400104	208- 230	409- 500	1.2-2.2	50/60	NEMA 5-15P 15 Amp., 250 Volt
WD-20 9400106	120	500	4.2	50/60	NEMA 5-15P 15 Amp., 250 Volt
WD-21A 9400110	120	1000	8.3	50/60	NEMA 5-15P 15 Amp., 250 Volt
WD-21A 9400112	208- 230	900- 1100	4.3-4.8	50/60	CEE 7/716 Amp., 250 Volt
WD-21A 9400113 Saudi Arabia	208- 230	1100	5.29- 4.78	50/60	BS-1363 - Fused Permaplug 16 Amp., 250 VAC
WD-21A 9400114	208- 230	900- 1100	4.3-4.8	50/60	NEMA 5-15P 15 Amp., 250 Volt
WD-35A 9400120	120	1400	11.7	50/60	NEMA 5-15P 15 Amp., 250 Volt
WD-35A 9400121	208- 230	1250- 1530	6-6.7	50/60	BS-1363 - Fused Permaplug 16 Amp., 250 VAC
WD-35A 9400122	208- 230	1250- 1530	6-6.7	50/60	CEE 7/7 16 Amp., 250 Volt
WD-35A 9400123 Saudi Arabia	208- 230~	1530	7.36- 6.65	50/60	CEE 7/7 16 Amp., 250 Volt
WD-35A 9400124	208- 230	1250- 1530	6-6.7	50/60	NEMA 5-15P 15 Amp., 250 Volt

### Capacity

**WD-20** Holds up to 40 standard hot dog buns.

**WD-21A** One 4" (100 mm) deep full size steam table pan. Holds up to 40-50 standard hot dog buns.

**WD-35A** Two 4" (100 cm) deep 2/3 size steam table pan. Holds up to 50-60 standard hot dog buns.

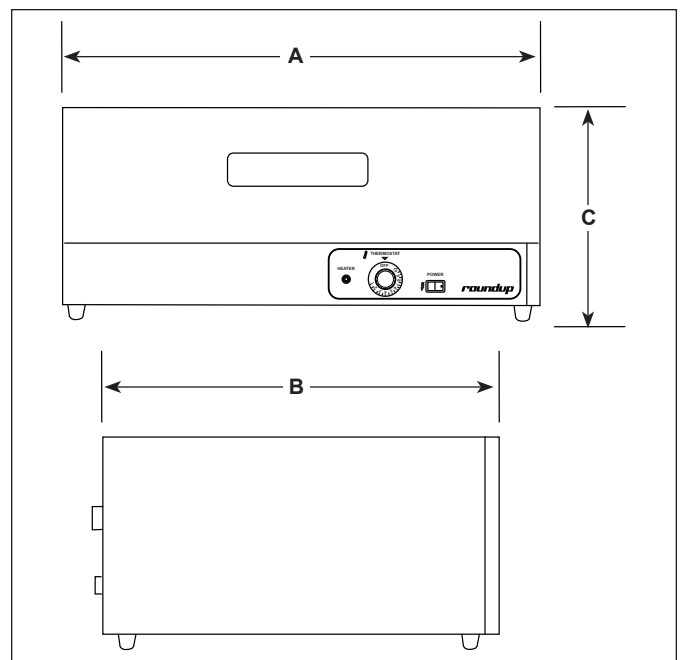
### Shipping Weight

WD-20 58 lbs. (27 kilos)

WD-21A 56 lbs. (26 kilos)

WD-35A 72 lbs. (33 kilos)

### Dimensions



Model	Width (A)	Depth (B)	Height (C)
<b>WD-20</b>	18-3/4" (476 mm)	21" (533 mm)	10-1/4" (260 mm)
<b>WD-21A</b>	22-3/16" (564 mm)	17" (432 mm)	10-3/8" (264 mm)
<b>WD-35A</b>	32-1/2" (826 mm)	17" (432 mm)	10-3/8" (264 mm)

# WARMER DRAWER

## INSTALLATION

### Unpacking

1. Remove unit and all packing materials from shipping carton.
2. Open the large box. Remove all packing materials and protective coverings from the unit and parts.
3. Wash removable parts in soap and water. Wipe all surfaces of the unit with a hot damp cloth.

**NOTE: Do not use a dripping wet cloth. Wring out before use.**

4. Install parts into unit.

**NOTE: If any parts are missing or damaged, contact Antunes Customer Service IMMEDIATELY at +1-877-392-7856 (toll free)**

### Equipment Setup

When placing the unit into service, pay attention to the following guidelines.

- Make sure power to the unit is off and the unit is at room temperature.
- Do not block or cover any openings on the unit.
- Do not immerse cord or plug in water.
- Keep cord away from heated surfaces.
- Do not allow cord to hang over edge of table or counter.

Connect the unit to the power supply. Refer to the specification plate for the proper voltage.

#### **⚠ CAUTION ⚠**

All electrical connections must be in accordance with local electrical codes and any other applicable codes.

#### **⚠ WARNING ⚠**

**ELECTRICAL SHOCK HAZARD. FAILURE TO FOLLOW THE INSTRUCTIONS IN THIS MANUAL COULD RESULT IN SERIOUS INJURY OR DEATH.**

- Electrical ground is required on this appliance.
- Do not modify the power supply cord plug. If it does not fit the outlet, have a proper outlet installed by a qualified electrician.

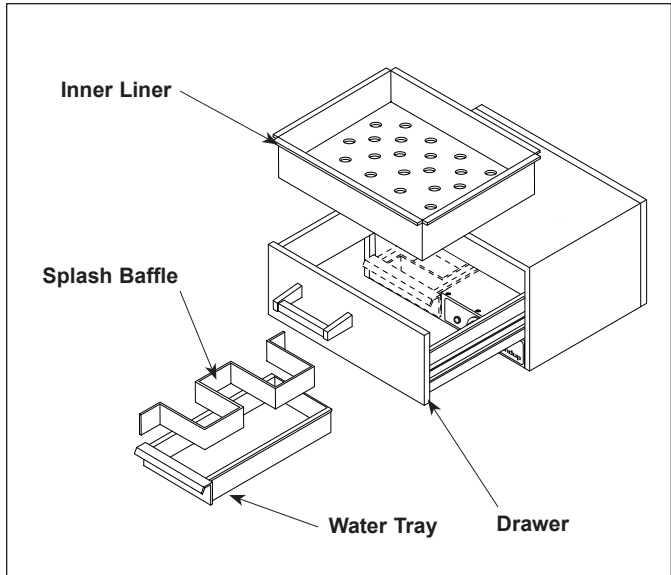


Figure 1. Warmer Drawer-WD-20

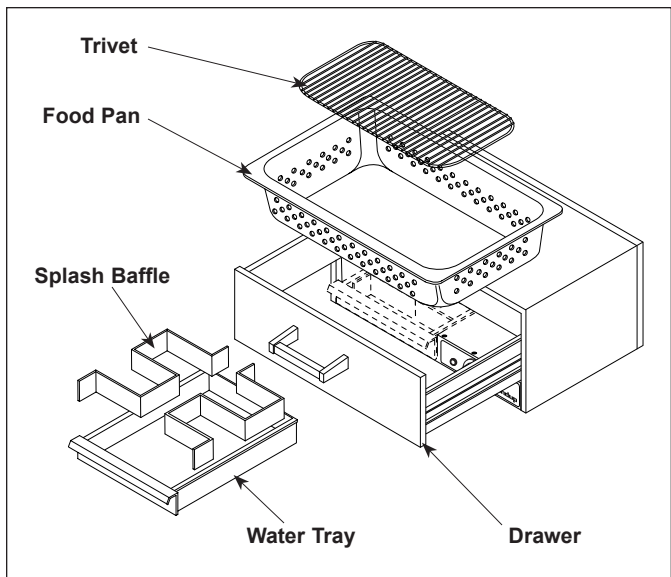


Figure 2. Warmer Drawer-WD-21A & WD-35A

- Do not use an extension cord with this appliance.
- The unit should be grounded according to local electrical codes to prevent the possibility of electrical shock. It requires a grounded receptacle with separate electrical lines, protected by fuses or circuit breaker of the proper rating.
- Check with a qualified electrician if you are in doubt as to whether the appliance is properly grounded.

## OPERATION

### Operating Instructions

The recommended starting temperature for hot dog buns and hard rolls is 140°F (60°C). Your operation may require temperature adjustment up or down, depending on product and usage.

Most products warm to serving temperature of 130°- 140°F (54°- 60°C) in 15-20 minutes and remain ready to serve for up to 1½ hours, if the product remains in its original packaging. If the product is removed from its original packaging, the serving time is reduced to 30-45 minutes.

1. Turn the rocker switch to the ON position.
2. If moist environment is desired, pull the water tray out, fill with tap water, then close the water tray. If dry environment is desired, do not fill the water tray.
3. Set the thermostat control to the desired setting. The heater ON light will be lit.
4. Load product into the drawer.

### Hi-Limit Reset

A hi-limit thermostat with a reset switch is contained in the heating circuit. If the unit should overheat for any reason, the hi-limit thermostat opens and cuts off power to the heating element.

To reset the thermostat:

1. Turn off the rocker switch (power on/off), unplug the power cord and allow the unit to cool down before proceeding.
2. Remove the base plate and push in the reset switch located on the bottom of the thermostat (Figure 4).

If hi-limit thermostat continually trips, contact Antunes Technical Service to determine the reason for overheating.

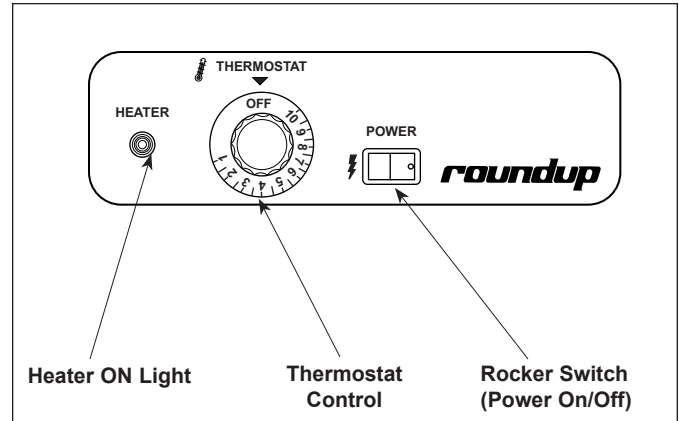


Figure 3. Controls

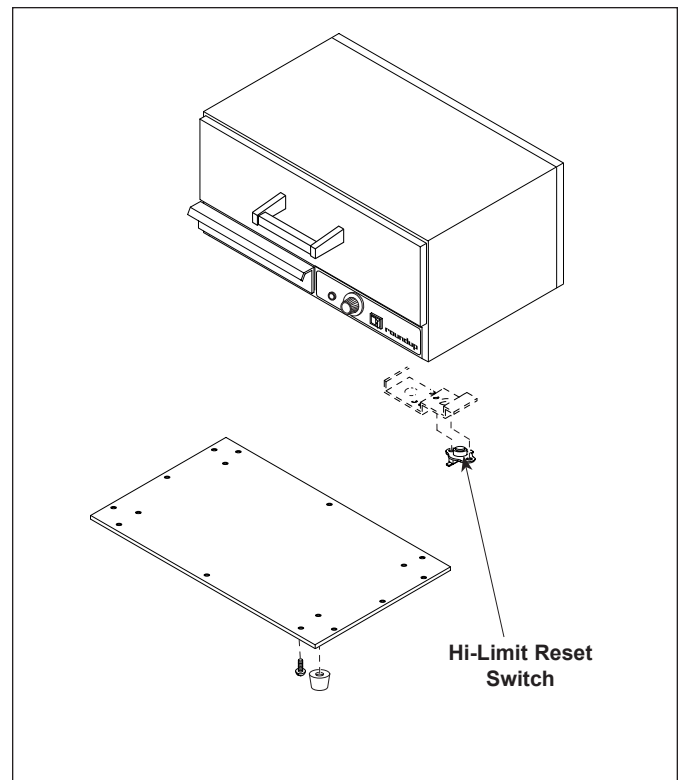


Figure 4. Hi-Limit Reset

# WARMER DRAWER

## MAINTENANCE

### ⚠ WARNING ⚠

Turn the unit off, disconnect the power source and allow the unit to cool down before performing any service or maintenance on the unit.

### Cleaning

#### DAILY

1. Turn off the rocker switch (power on/off), unplug the power cord and allow the unit to cool down before proceeding.
2. Remove parts from inside warmer drawer. Remove water tray and baffle(s). Wash all parts in soap and water and rinse in clear water.
3. Wipe exterior of unit with a damp cloth or stainless steel cleaner, then wipe dry.

### ⚠ CAUTION ⚠

To prevent damage to the unit, do not use abrasive cleaners on the unit.

### ⚠ WARNING ⚠

Use caution when using caustic cleaning solutions. Read all manufacturer label instructions to avoid personal injury.

**NOTE: If mineral deposit buildup exists, fill water tray (with baffle installed) with white vinegar and allow to soak overnight to remove deposits.**

4. Re-install all parts into warmer drawer. Install water baffle(s) and water tray.

#### WEEKLY

1. Turn off the rocker switch (power on/off), unplug the power cord and allow the unit to cool down before proceeding.
2. Remove all parts from the drawer. Remove water tray and baffle(s). Wash parts in soap and water and rinse in clear water.
3. Pull warmer drawer out. Push down on the interlocking tabs (above each drawer side rail) and pull drawer from unit.
4. Wash interior of drawer with a clean, damp cloth.
3. Wipe exterior of unit with a damp cloth or stainless steel cleaner, then wipe dry.
4. Re-install all parts into unit.

### Replacing Components

NOTE: It is recommended that all service procedures be performed by a qualified authorized service technician.

NOTE: Reference numbers in procedures correspond to replacement parts on pages 10-11 (WD-20) and 12-13 (WD-21A & WD-35A).

#### POWER CORD REPLACEMENT

1. Turn off rocker switch (power on/off), unplug the power cord and allow the unit to cool down before proceeding.
2. Remove the drawer and water tray.
3. Carefully turn unit over and remove the base plate (3).
4. Disconnect power cord wires from terminal block.
5. Remove strain relief nut.
6. Squeeze strain relief (7) and pull cord out.
7. Remove nut from inside of unit and remove strain relief.
8. Reverse steps 2-7 to install new power cord and/or strain relief.

#### HI-LIMIT THERMOSTAT REPLACEMENT

1. Turn off rocker switch (power on/off), unplug the power cord and allow the unit to cool down before proceeding.
2. Remove the drawer and water tray.
3. Carefully turn unit over and remove the base plate (3).
4. Disconnect wires from hi-limit thermostat (18).
5. Reverse steps 2-4 to install replacement hi-limit thermostat.



## MAINTENANCE (continued)

### THERMOSTAT CONTROL REPLACEMENT

1. Turn off rocker switch (power on/off), unplug the power cord and allow the unit to cool down before proceeding.
2. Remove the drawer and water tray.
3. Remove thermostat element from tube clip on inside of unit.
4. Carefully turn unit over and remove the base plate (3).
5. Disconnect wires from thermostat control (9).
6. Remove knob (20) from front of control.
7. Reverse steps 2-6 to install replacement control.

### HEATER ON LIGHT REPLACEMENT

1. Turn off rocker switch (power on/off), unplug the power cord and allow the unit to cool down before proceeding.
2. Remove the drawer and water tray.
3. Carefully turn unit over and remove the base plate (3).
4. Disconnect wires and remove the indicator light (13).
5. Reverse steps 2-4 to install replacement light.

### ROCKER SWITCH (POWER ON/OFF) REPLACEMENT

1. Turn off rocker switch (power on/off), unplug the power cord and allow the unit to cool down before proceeding.
2. Remove the drawer and water tray.
3. Carefully turn unit over and remove the base plate (3).
4. Disconnect wires from rocker switch (8) and pull switch from unit..
5. Reverse steps 2-4 to install replacement switch.

### HEATER ELEMENT REPLACEMENT

1. Turn off rocker switch (power on/off), unplug the power cord and allow the unit to cool down before proceeding.
2. Remove the drawer and water tray.
3. Carefully turn unit over and remove the base plate (3).
4. Disconnect wires from the heating element (12).
5. Carefully turn unit right side up.
6. Remove screws from heater retainer bracket. Remove tube clips (22) securing element to cabinet side.
7. Reverse steps 2-6 to install replacement element.

# WARMER DRAWER

## TROUBLESHOOTING

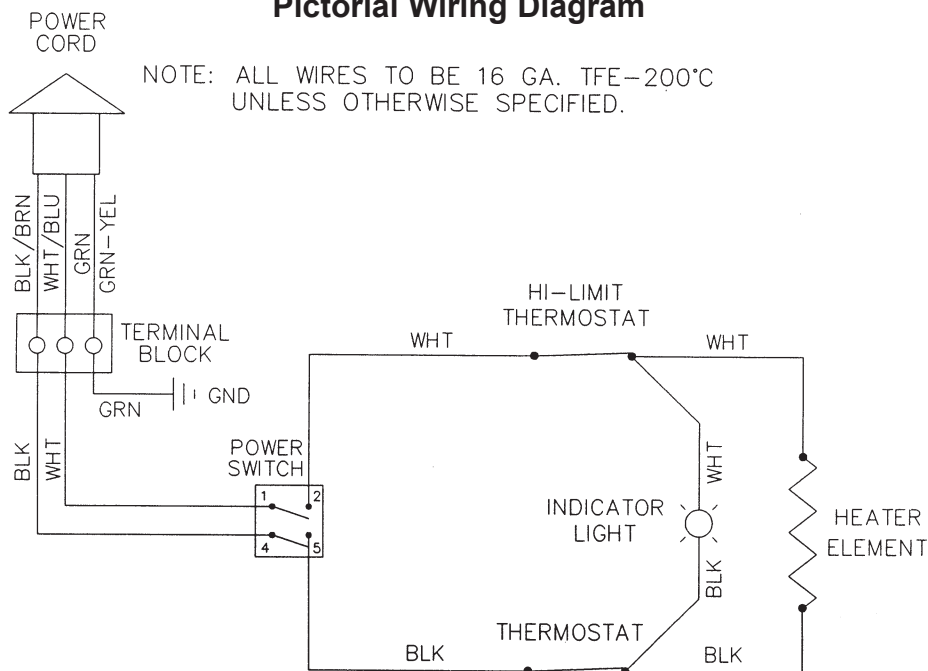
### ⚠ WARNING ⚠

To avoid possible personal injury and/or damage to the unit, inspection, test and repair of electrical equipment should be performed by qualified service personnel. The unit should be unplugged when servicing.

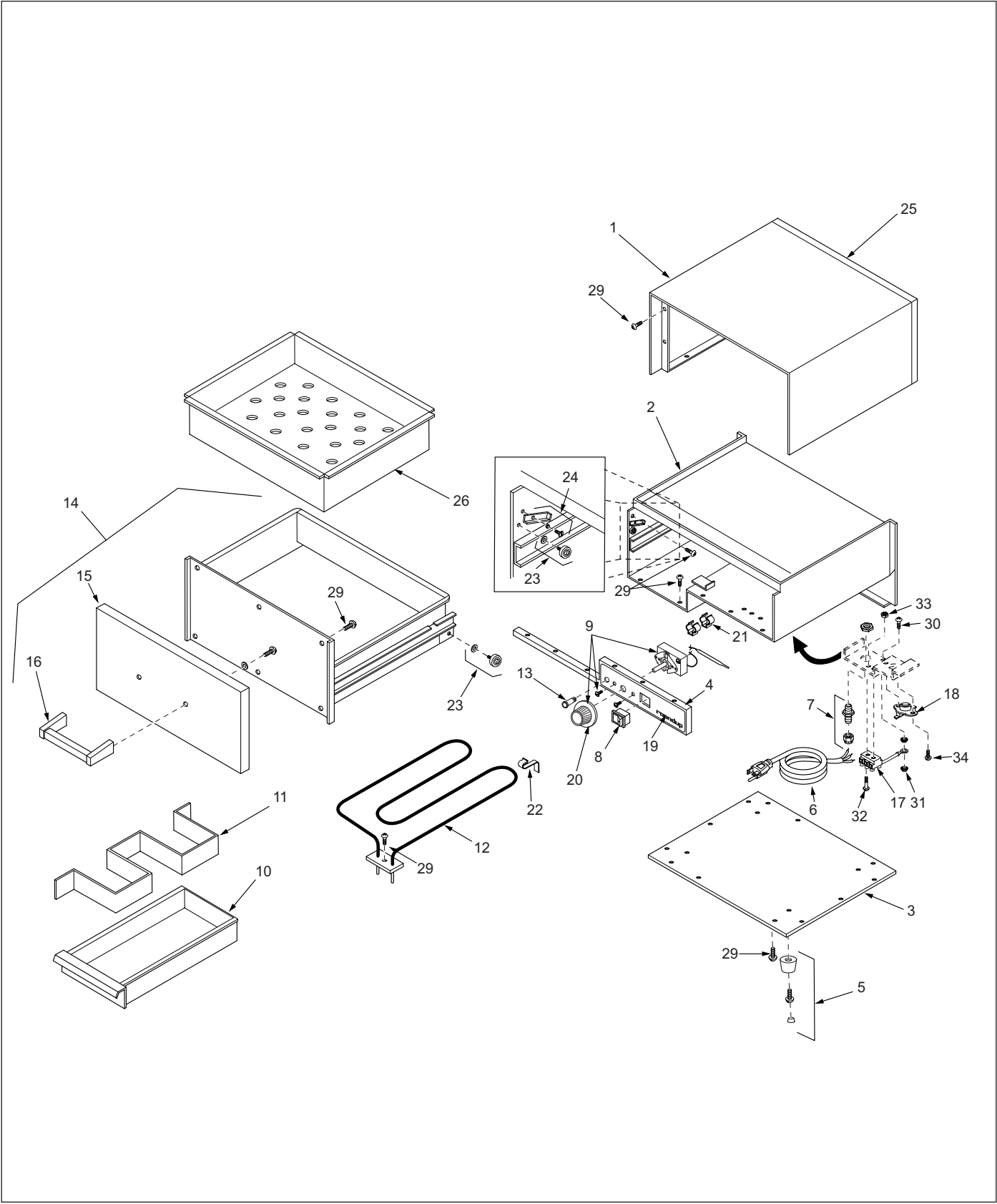
Problem	Possible Cause	Corrective Action
Unit will not heat up.	Power cord not plugged in.	Plug cord into outlet.
	Circuit breaker tripped.	Reset circuit breaker.
	Hi-limit switch tripped.	Reset hi-limit switch.
	Power cord defective.	Replace power cord.
	Loose wire at rocker switch or ground.	Tighten wires and replace if burned or charred.
	Rocker switch defective.	Replace switch.
	Heating element defective.	Replace element.
	Thermostat control defective.	Replace temperature control.
Hi-limit thermostat defective.	Replace thermostat.	

## WIRING DIAGRAM

### Pictorial Wiring Diagram



REPLACEMENT PARTS - WD-20



# WARMER DRAWER

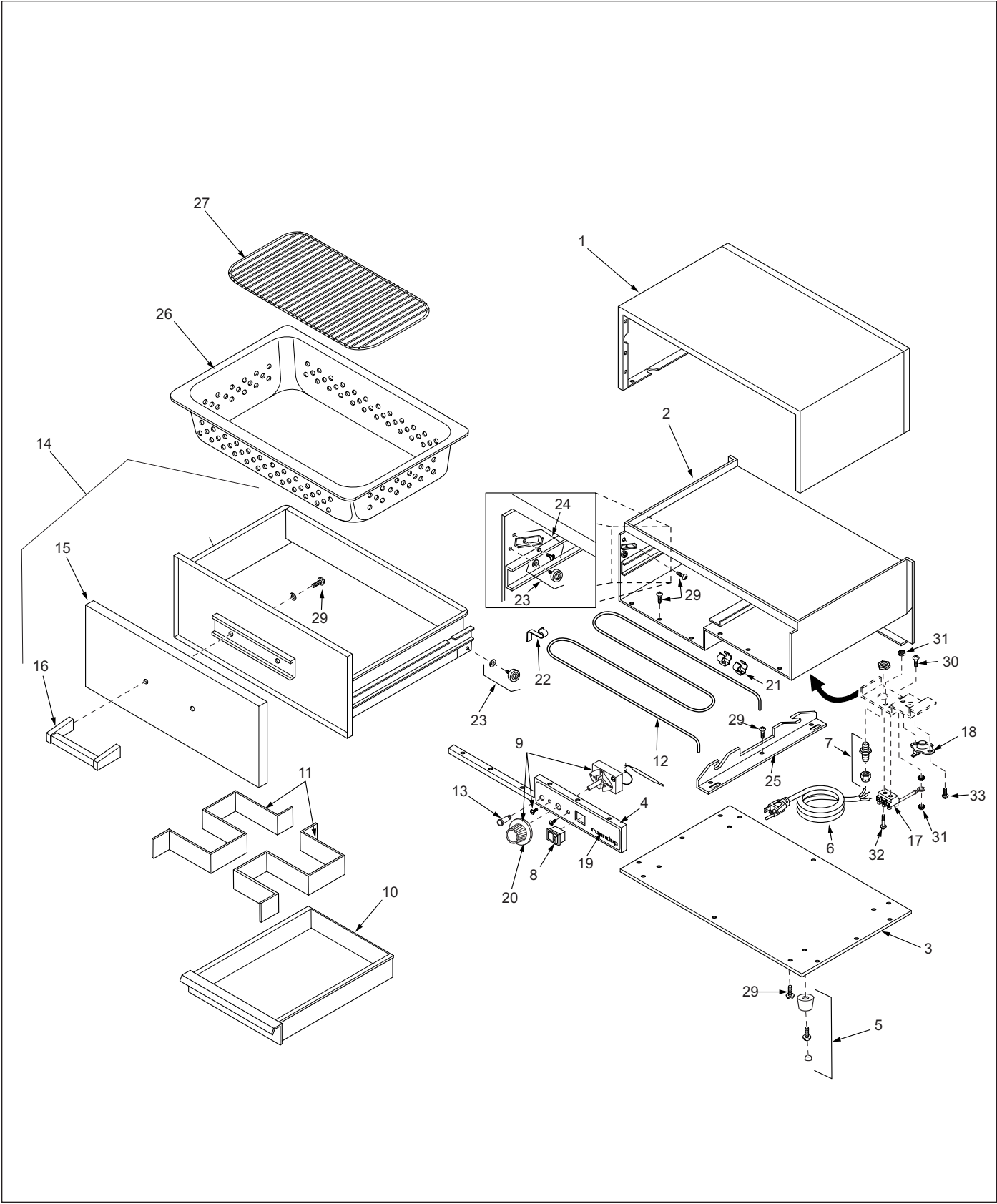
## REPLACEMENT PARTS – WD-20 (continued)

Item	Part No.	Description	Qty.
1	0010439	Housing, Outer	1
2	0021010	Housing, Inner	1
3	0502937	Base Plate	1
4	0502897	Front Panel	1
5	210K230	Bumper Leg Kit	1
6	0700463	Power Cord NEMA 5-15P 15 Amp 250 Volt (Mfg. No. 9400100, 9400104, 9400106, 9400110, 9400114, 9400120, & 9400124)	1
	0700556	Power Cord BS-1363 - Fused Permaplug 16 Amp., 250 VAC (Mfg. No. 9400101, 9400103, 9400113, & 99400121)	1
	0700453	Power Cord CEE 7/7 16 Amp., 250 Volt (Mfg. No. 9400102, 9400112, 9400122, & 9400123)	1
	0700556	Power Cord (9400101 Only)	1
7	4010151	Strain Relief	1
	0400315	Strain Relief (9400102 Only)	1
8	7000882	Rocker Switch Replacement Kit	1
9	4030103	Thermostat 220F Max	1
10	0020611	Water Tray (Incl. # 11)	1
11	0501666	Splash Baffle	1
12	4030225	Heating Element, 120 Volt, 500 Watt	1
	4030231	Heating Element, 230 Volt, 500 Watt	1

Item	Part No.	Description	Qty.
13	4060203	Indicator Light, Heater ON, 120 Volt	1
	4060229	Indicator Light, Heater ON, 230 Volt	1
14	0020610	Drawer Assembly (Incl. # 15 & 16)	1
15	0501662	Drawer Front	1
16	210K128	Handle Kit	1
17	4060304	Terminal Block	1
18	4030291	Thermostat, Hi-Limit	1
19	1000928	Label	1
20	2100110	Knob, F°	1
	2100224	Knob, C°	1
21	300P108*	Tube Clip, Thermostat Element	1
22	300P107*	Tube Clip, Heating Element	1
23	210K195	Bearing Kit	2
24	050K125	Lock Lever Kit, LH	1
	050K124	Lock Lever Kit, RH	1
25	0501654	Rear Panel	1
26	0501669	Liner, Drawer	1
27	0700504	Trivet (not shown)	1
28	0800239	Wire Set (not shown)	1
29	308P157*	Screw, #8-32 x 3/8"	1
30	308P124*	Screw, #8-32 x 1/2"	1
31	308P143*	Nut, #8-32	1
32	306P123*	Screw, #6-32 x 7/8"	1
33	306P130*	Nut, #6-32 KEPS	1
34	308P133*	Screw, #8-32 x 1/4"	1

\* Only available in packages of 10.

REPLACEMENT PARTS – WD-21A & 35A



# WARMER DRAWER

## REPLACEMENT PARTS – WD-21A & 35A (continued)

Item	Part No.	Description	Qty.
1	0501894	Cover (WD-21A)	1
	0501199	Cover (WD-35A)	1
2	0021011	Housing, Inner (WD-21A)	1
	0021012	Housing, Inner (WD-35A)	1
3	0501841	Base Plate (WD-21A)	1
	0501196	Base Plate (WD-35A)	1
4	0502898	Front Panel	1
5	210K230	Bumper Leg Kit	1
6	0700463	Power Cord NEMA 5-15P 15 Amp 250 Volt (Mfg. No. 9400100, 9400104, 9400106, 9400110, 9400114, 9400120, & 9400124)	1
	0700556	Power Cord BS-1363 - Fused Permaplug 16 Amp., 250 VAC (Mfg. No. 9400101, 9400103, 9400113, & 99400121)	1
	0700453	Power Cord CEE 7/7 16 Amp., 250 Volt (Mfg. No. 9400102, 9400112, 9400122, & 9400123)	1
7	4010151	Strain Relief	1
8	4010151	Rocker Switch, Power On/Off, 120 Volt	1
	4010137	Rocker Switch, Power On/Off, 230 Volt	1
9	403K102	Thermostat Kit, F° (Incl. #20)	1
	403K160	Thermostat Kit, C° (Incl. #20)	1
10	0020246	Water Tray (Incl. # 11)	1
11	0500105	Splash Baffle	2
	0500105	Splash Baffle	3
12	4030172	Heating Element, 120 Volt (WD-21A)	1
	4030173	Heating Element, 230 Volt (WD-21A)	1
	4030175	Heating Element 120 Volt (WD-35A)	1
	4030176	Heating Element 230 Volt (WD-35A)	1

Item	Part No.	Description	Qty.
13	4060323	Indicator Light, Heater ON, 120 Volt	1
	4060229	Indicator Light, Heater ON, 230 Volt	1
14	0020451	Drawer Assembly (WD-21A) (Incl. # 15 & 16)	1
	0020259	Drawer Assembly (WD-35A) (Incl. # 15 & 16)	1
15	0500783	Drawer Front (WD-21A)	1
	0500820	Drawer Front (WD-35A)	1
16	2100106	Handle	1
17	4060304	Terminal Block	1
18	4030291	Thermostat, Hi-Limit	1
19	1000925	Label	1
20	2100110	Knob, F°	1
	2100224	Knob, C°	1
21	300P108	Tube Clip, Thermostat Element	1
22	300P107	Tube Clip, Heating Element	1
23	210K195	Bearing Kit	4
24	050K125	Lock Lever Kit, LH	1
	050K124	Lock Lever Kit, RH	1
25	0502929	Bracket, Element Retaining	1
26	2130104	Pan (WD-21A)	1
	2130117	Pan (WD-35A)	2
27	0800113	Trivet (WD-21A)	1
	0800109	Trivet (WD-35A)	2
28	0700504	Wire Set (not shown)	1
29	308P133*	Screw, #8-32 x 1/4"	1
30	308P124*	Screw, #8-32 x 1/2"	1
31	308P143*	Nut, #8-32	1
32	306P123*	Screw, #6-32 x 7/8"	1
33	306P104*	Screw, #6-32 x 1/4"	1

\* Only available in packages of 10.



## LIMITED WARRANTY

Equipment manufactured by A.J. Antunes & Co. (Antunes) has been constructed of the finest materials available and manufactured to high quality standards. These units are warranted to be free from electrical and mechanical defects for a period of one (1) year from date of purchase under normal use and service, and when installed in accordance with manufacturer's recommendations. To insure continued operation of the units, follow the maintenance procedures outlined in the Owner's Manual. During the first 12 months, electromechanical parts, non-overtime labor, and travel expenses up to 2 hours (100 miles/160 km), round trip from the nearest Authorized Service Center are covered.

1. This warranty does not cover cost of installation, defects caused by improper storage or handling prior to placing of the Equipment. This warranty does not cover overtime charges or work done by unauthorized service agencies or personnel. This warranty does not cover normal maintenance, calibration, or regular adjustments as specified in operating and maintenance instructions of this manual, and/or labor involved in moving adjacent objects to gain access to the equipment. This warranty does not cover consumable/wear items. This warranty does not cover damage to the Load Cell or Load Cell Assembly due to abuse, misuse, dropping of unit/shock loads or exceeding maximum weight capacity (4 lbs). This warranty does not cover water contamination problems such as foreign material in water lines or inside solenoid valves. It does not cover water pressure problems or failures resulting from improper/incorrect voltage supply. This warranty does not cover Travel Time & Mileage in excess of 2 hours (100 miles/160 km) round trip from the nearest authorized service agency.
2. Antunes reserves the right to make changes in design or add any improvements on any product. The right is always reserved to modify equipment because of factors beyond our control and government regulations. Changes to update equipment do not constitute a warranty charge.
3. If shipment is damaged in transit, the purchaser should make a claim directly upon the carrier. Careful inspection should be made of the shipment as soon as it arrives and visible damage should be noted upon the carrier's receipt. Damage should be reported to the carrier. This damage is not covered under this warranty.
4. Warranty charges do not include freight or foreign, excise, municipal or other sales or use taxes. All such freight and taxes are the responsibility of the purchaser.
5. THIS WARRANTY IS EXCLUSIVE AND IS IN LIEU OF ALL OTHER WARRANTIES, EXPRESSED OR IMPLIED, INCLUDING ANY IMPLIED WARRANTY OR MERCHANTABILITY OR FITNESS FOR A PARTICULAR PURPOSE, EACH OF WHICH IS HEREBY EXPRESSLY DISCLAIMED. THE REMEDIES DESCRIBED ABOVE ARE EXCLUSIVE AND IN NO EVENT SHALL ANTUNES BE LIABLE FOR SPECIAL CONSEQUENTIAL OR INCIDENTAL DAMAGES FOR THE BREACH OR DELAY IN PERFORMANCE OF THIS WARRANTY.



### Corporate Headquarters

Carol Stream, Illinois  
Phone: +1 (630) 784-1000  
Toll Free: +1 (800) 253-2991  
Fax: +1 (630) 784-1650

### China Facility

Suzhou, China  
Phone: +86-512-6841-3637  
Fax: +86-512-6841-3907